

UNO

Urban
Natural
Oasis

Urban Natural
Oasis

01. identity.

UNO is 32 flawlessly designed apartments, each offering ideal layouts and stunning views of the Mediterranean Sea. Every detail is meticulously planned in the complex because it's these details that create comfort.

Unique concept



main features.

Investment opportunities

With a projected net annual income of 6%, the project promises excellent returns. In addition to the rental returns expected, a well-maintained project could potentially experience an approximate 20% increase in value upon completion.

Exclusive amenities

Both apartment blocks offer a luxury comfort level, including a pool, spa, gym, massage room, and laundry facilities – everything necessary for complete relaxation and tranquility.

The rooftop terrace with a barbecue area is a unique advantage of this complex, offering stunning sea views from the upper floors.

Utility services

The complex features a state-of-the-art elevator, a beautifully landscaped communal green area, covered parking spaces, and an advanced alarm system for enhanced security. Maintenance and management services are provided to ensure that all these facilities are well-maintained and operate smoothly, contributing to the overall quality of life in the complex.

03. location.

UNO is situated in a picturesque location with stunning sea views, just 5 minutes away from the best beach in the Chloraka area and 10 minutes from the center of Paphos. It's the perfect location for comfortable living, with nearby shops and supermarkets, parks and promenades, a private international school and a nursery.

Picturesque place

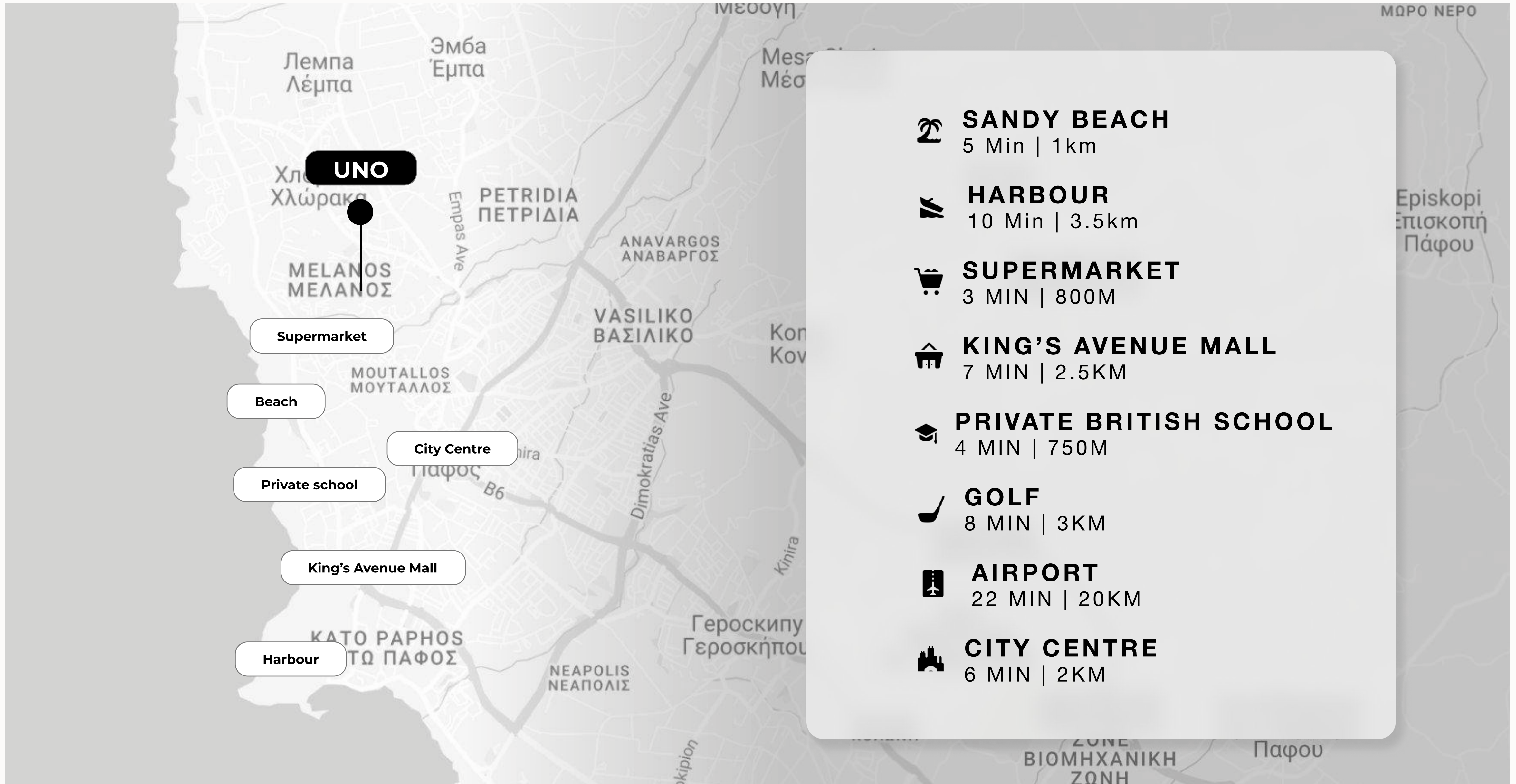


view



view





UNO

Supermarket

Beach

City Centre

Private school

King's Avenue Mall

Harbour



SANDY BEACH
5 Min | 1km



HARBOUR
10 Min | 3.5km



SUPERMARKET
3 MIN | 800M



KING'S AVENUE MALL
7 MIN | 2.5KM



PRIVATE BRITISH SCHOOL
4 MIN | 750M



GOLF
8 MIN | 3KM



AIRPORT
22 MIN | 20KM



CITY CENTRE
6 MIN | 2KM

Urban Natural
Oasis

04. facilities

Spa

Gym

Pool

Unique design

Massage room

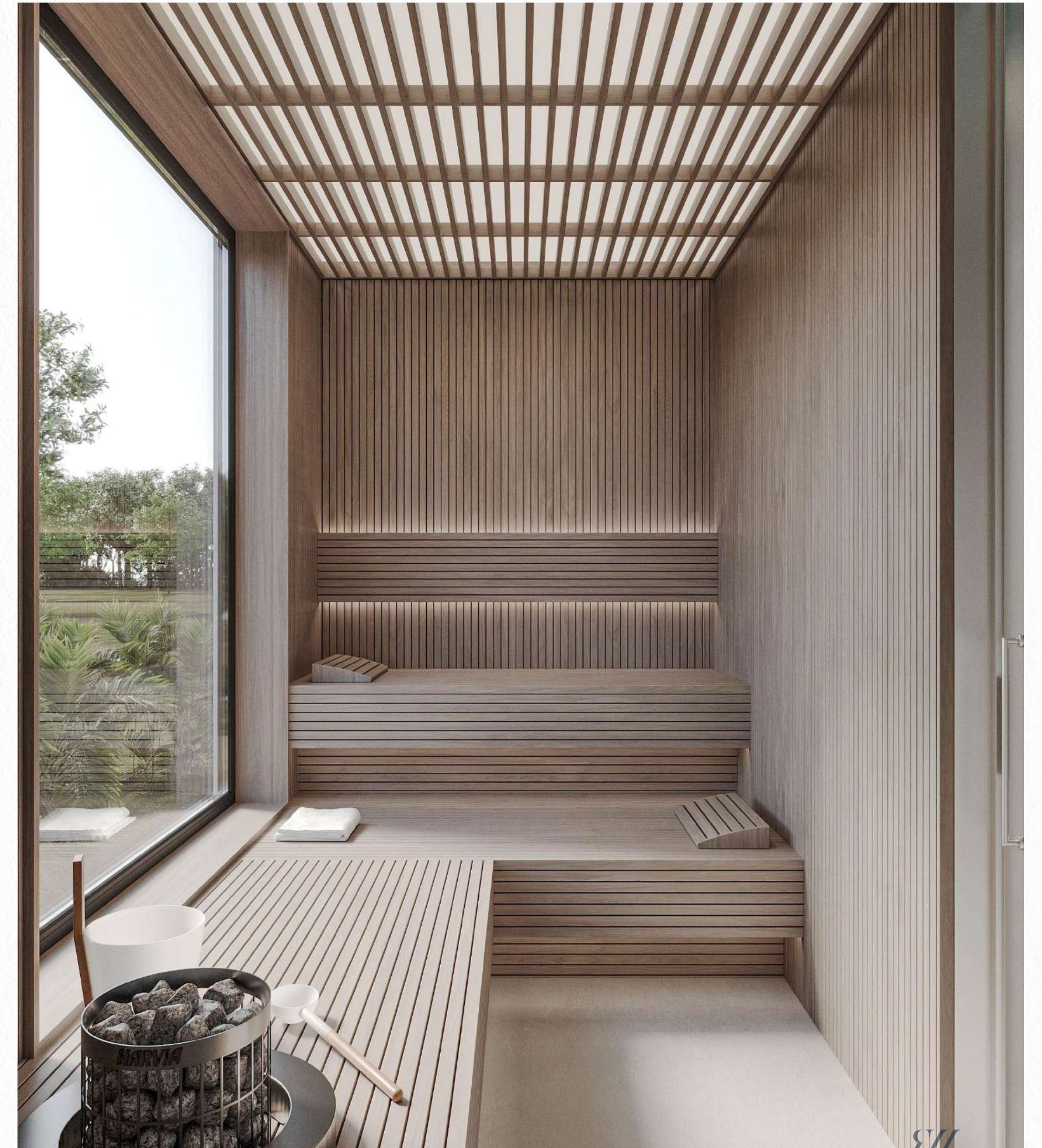
Laundry facilities

Rooftop barbecue area



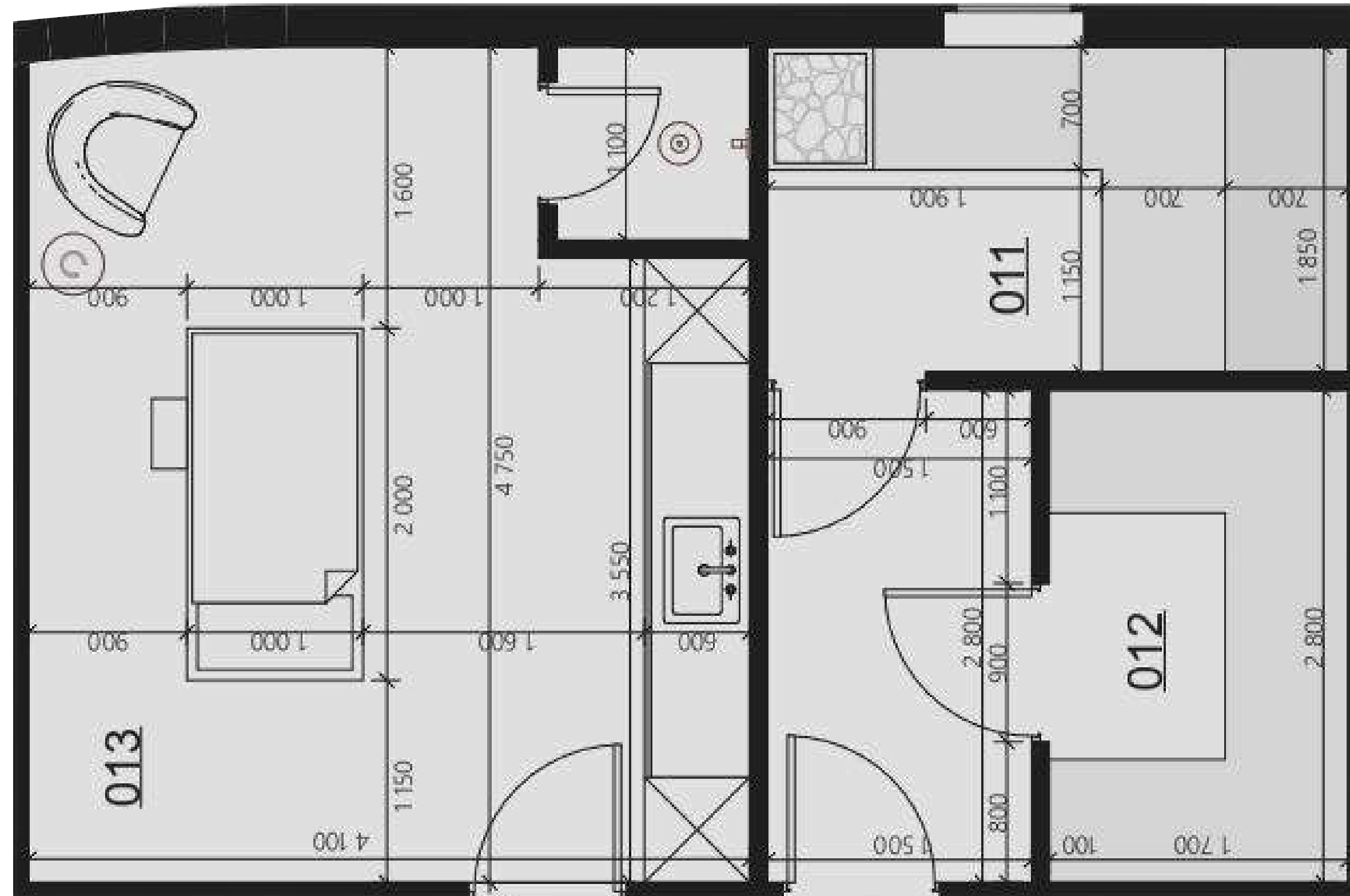
SPA

The luxurious Spa features a sauna overlooking the bonsai garden, a Turkish hammam for two and a cozy massage room. UNO is a place where you can always find time for both exercise and relaxation.





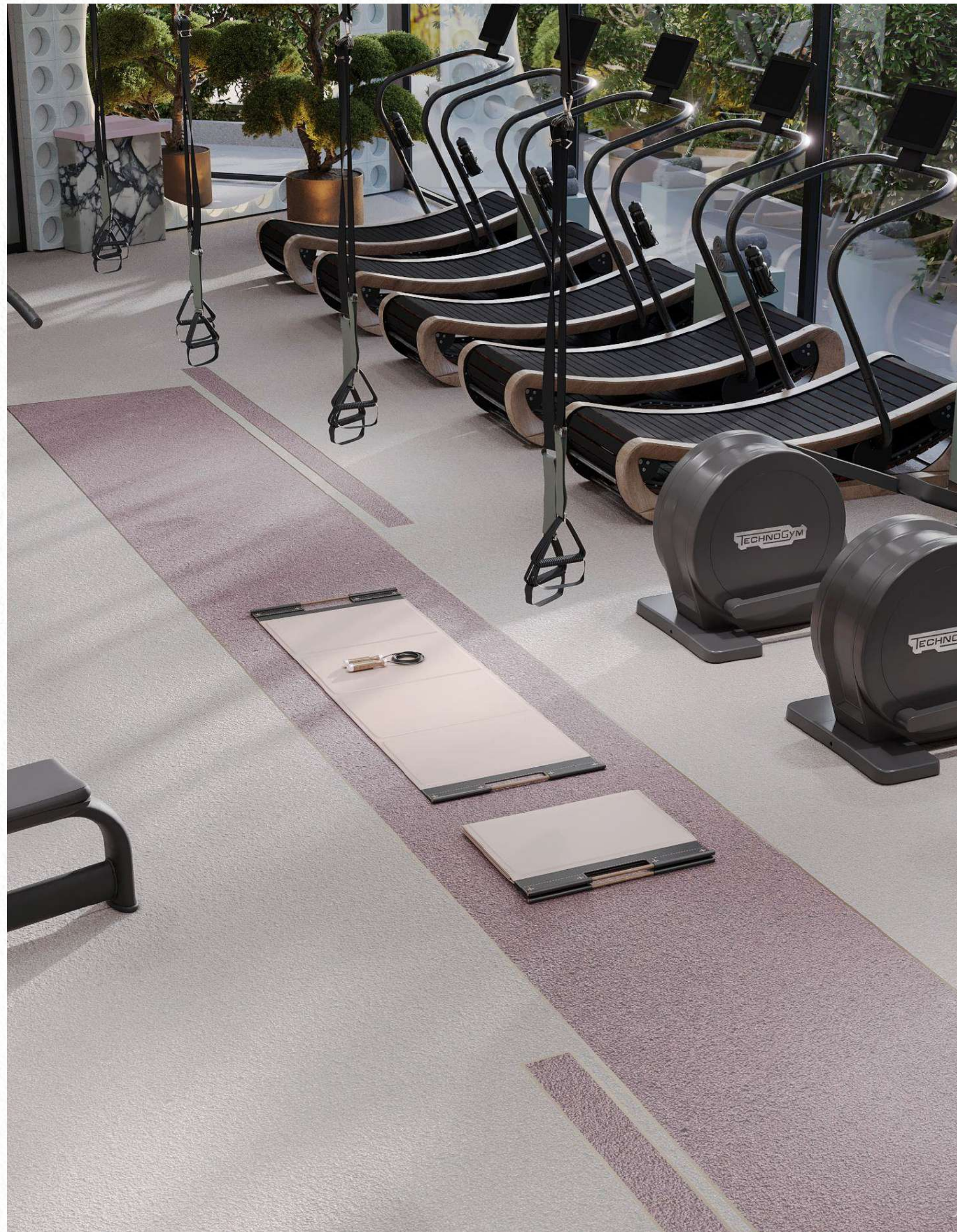
LAYOUT



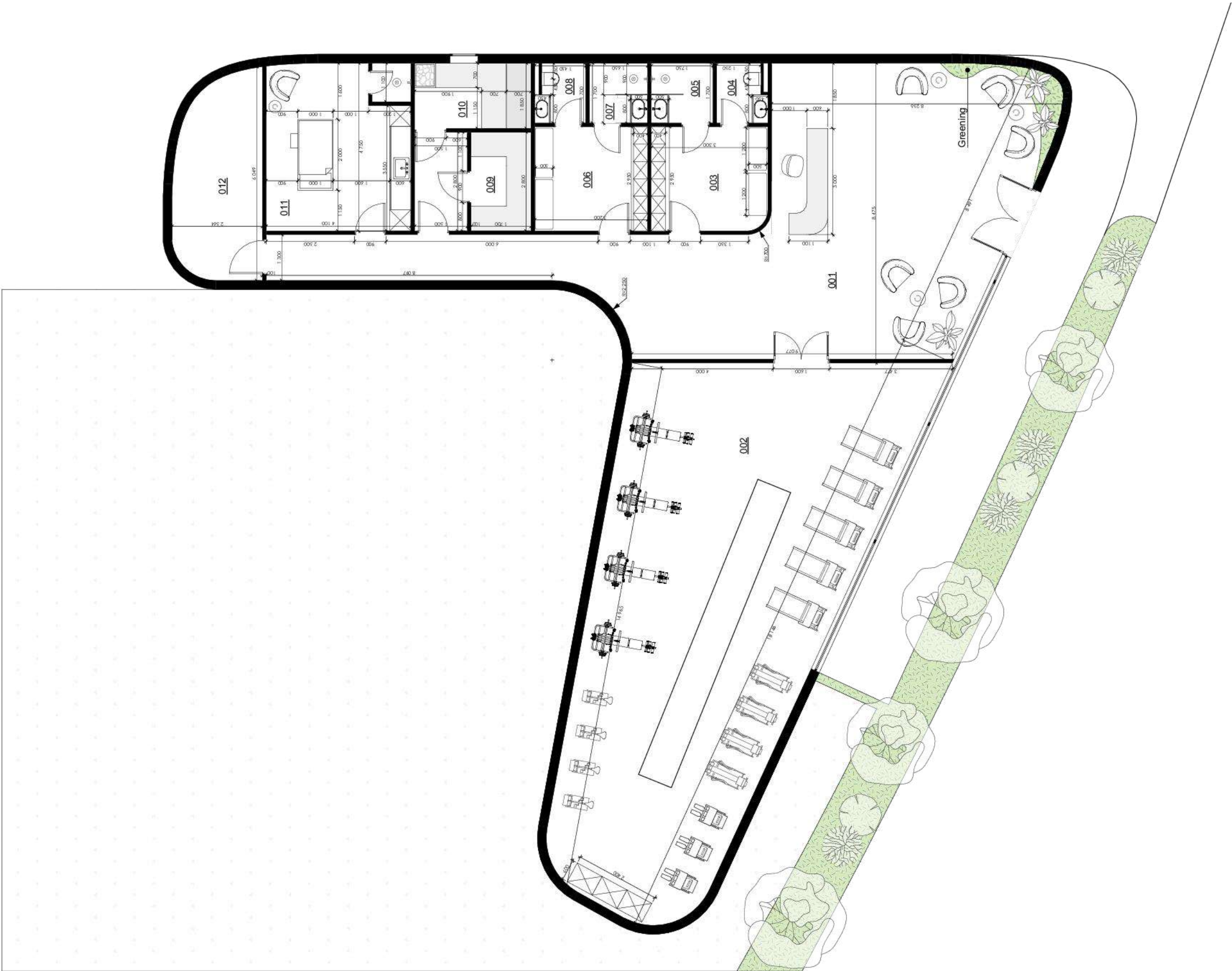


GYM

The large, full-service gym at the residence allows you to engage in your favorite type of exercise. UNO Fitness offers cardio and strength training equipment, stretching, fitness gear and even hammocks for fly yoga. When using the treadmill or stationary bike, you'll experience the sensation of a real outdoor walk thanks to the panoramic view of the olive tree alley.



LAYOUT



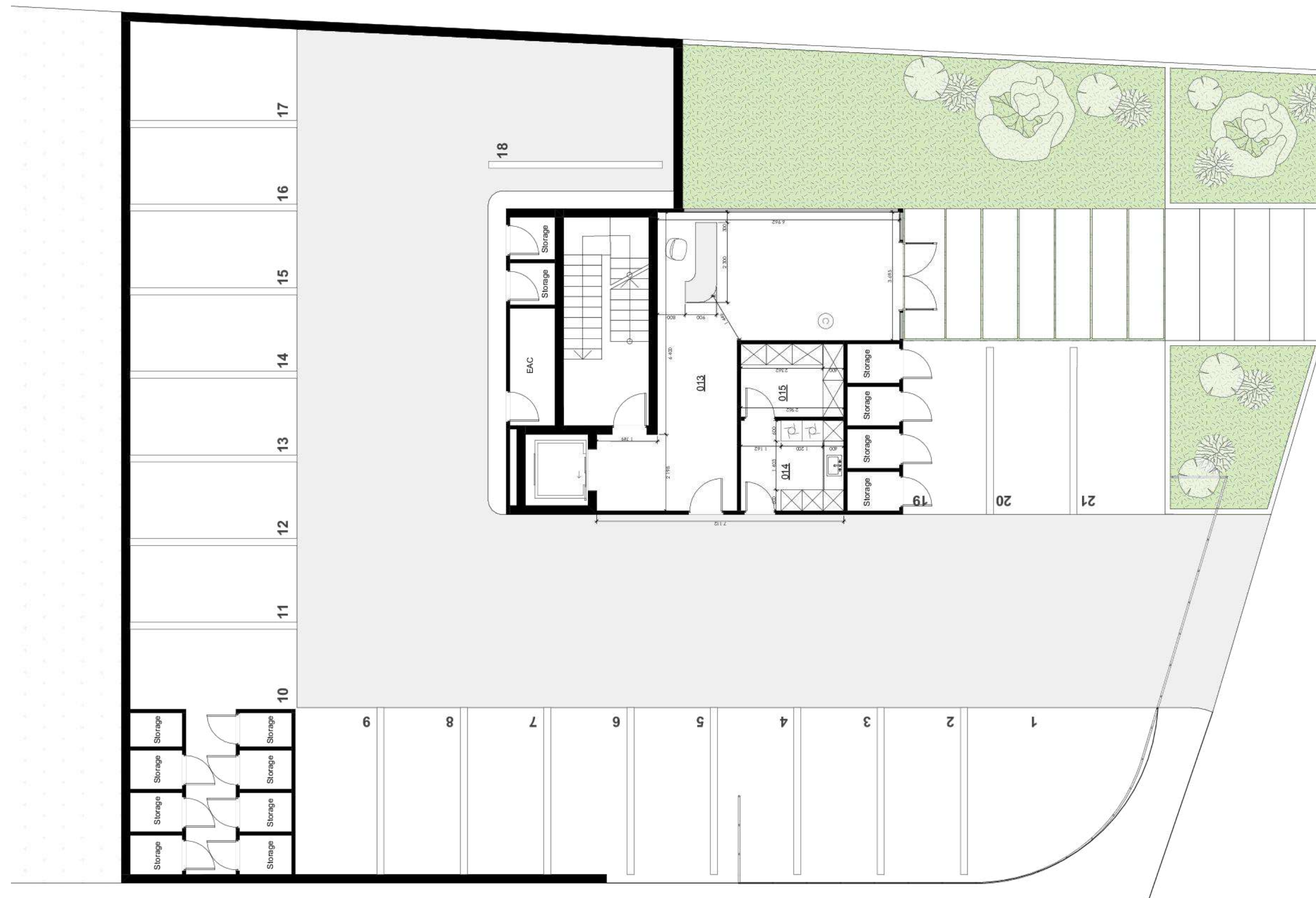
services

The project offers comprehensive maintenance services to ensure the comfort, security and convenience of residents. The complex also features covered parking for residents and guests, storage rooms and a laundry facility. Key features include 24/7 security with advanced systems and personnel, a dedicated concierge team for various resident needs, and a stylish lobby with a staffed reception desk. Regular maintenance of common areas, emergency repair services, optional housekeeping, on-site technical support, and efficient waste management are all provided.





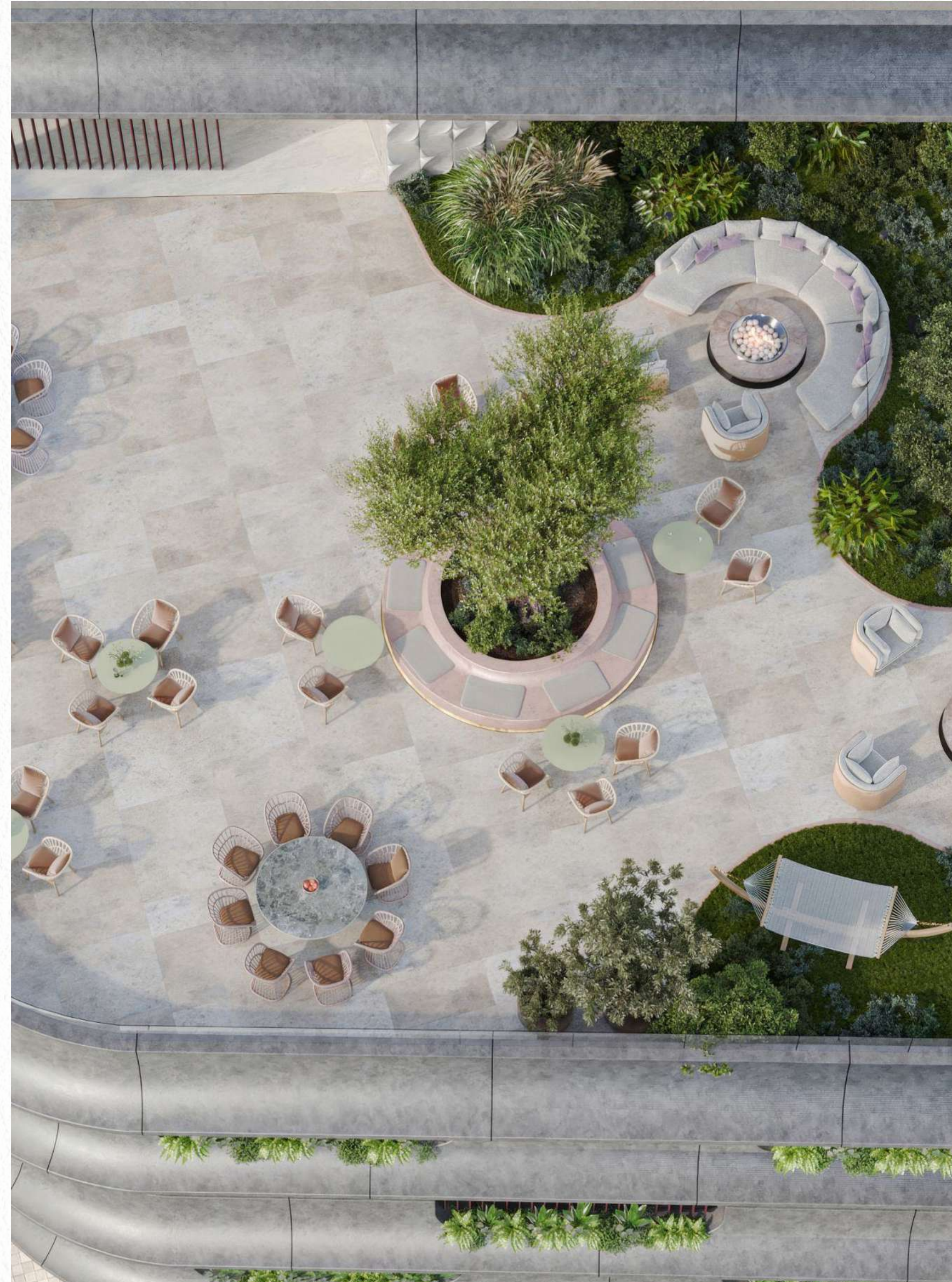
LAYOUT



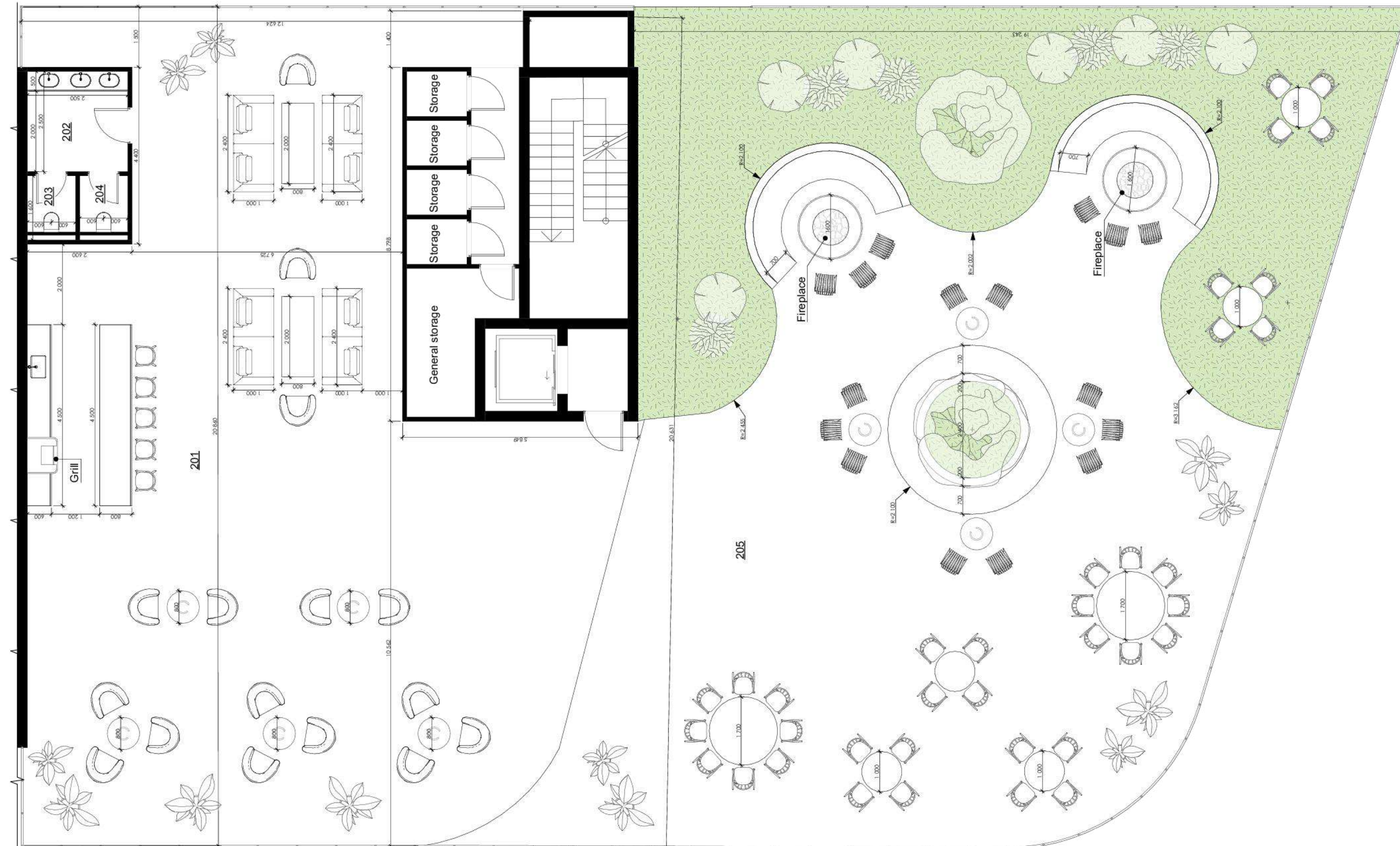
rooftop

On the rooftop of the complex, you'll find a panoramic terrace with a lounge area, café and garden. This is the place where you can truly enjoy life to the fullest. It's a space for relaxation and contemplation of the Mediterranean, for gatherings with friends or business partners and leisure or hosting events.





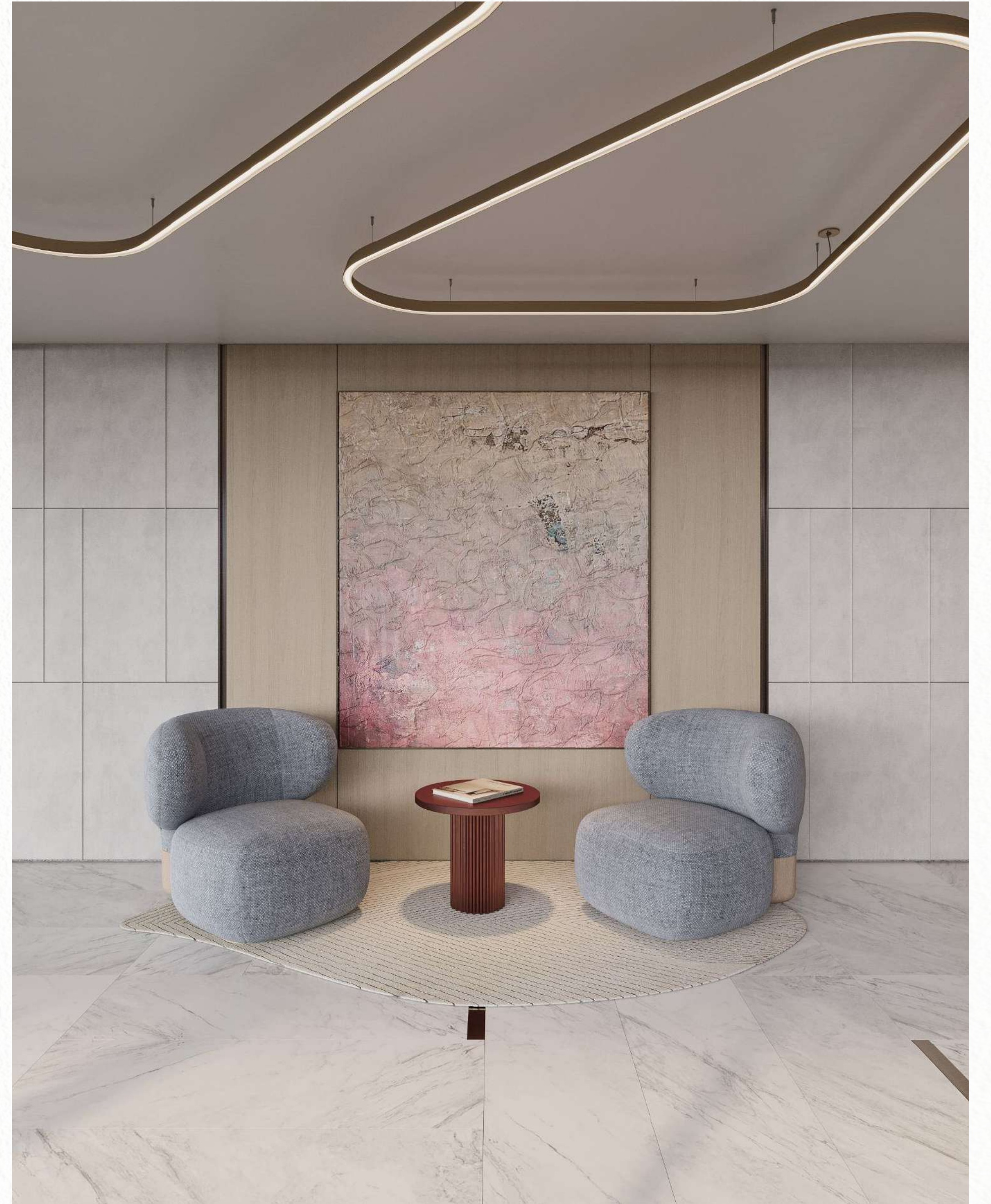
LAYOUT



The architectural concept of the complex is based on the synergy of lightness and comfort. The main goal of the project's architecture is to inspire in every line, curve and texture. The elegance of the facades captures attention with their smooth lines, inspired by gentle sea waves, while decorative asymmetrical arches bring freshness to the architecture, filling the space with a sense of breeze.



design



Urban Natural
Oasis

05. variations.

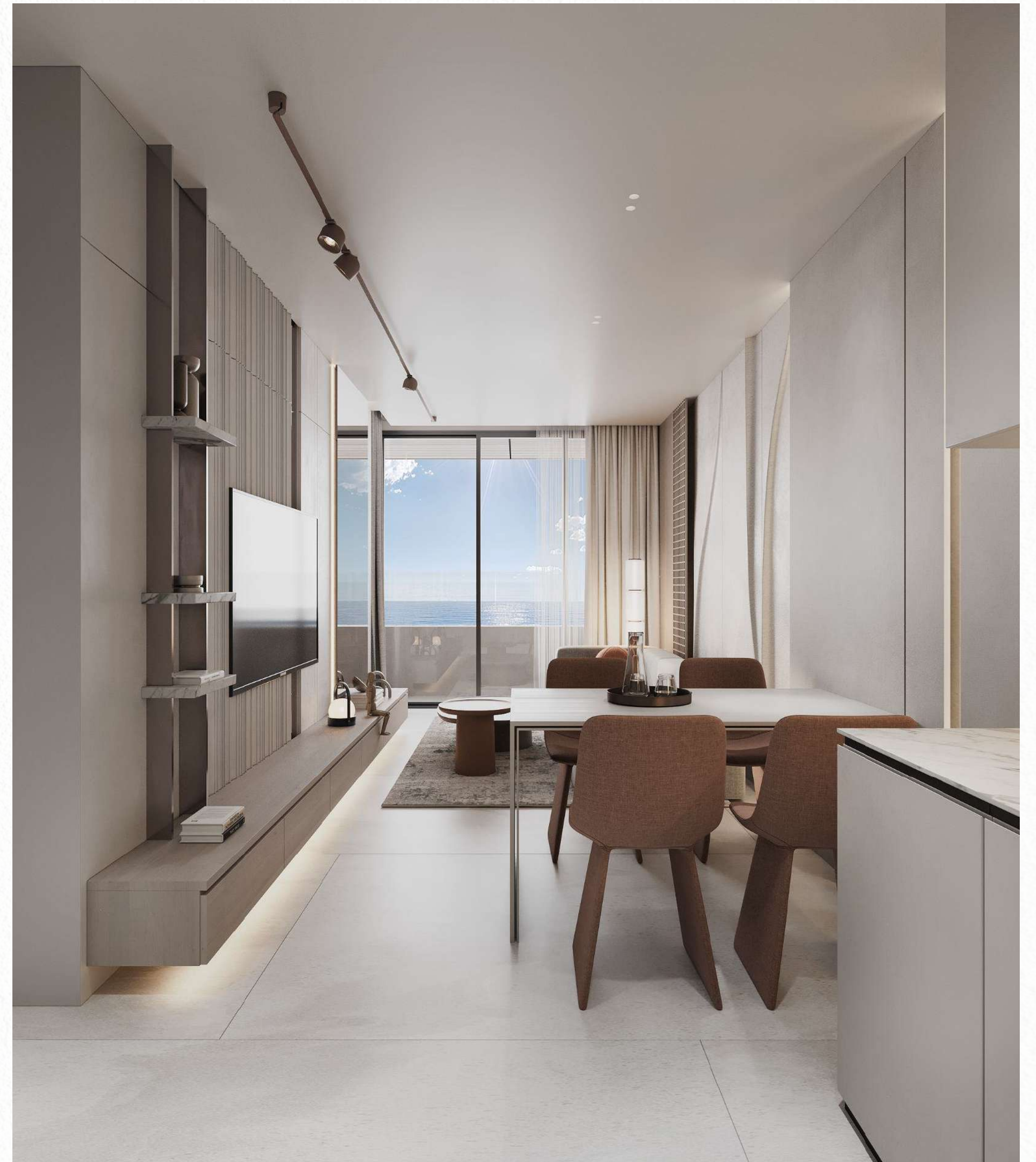
UNO consists of 8 one-bedroom apartments and 24 two-bedroom apartments. Aesthetic appeal is a priority for our apartments.



1-bedroom apartments

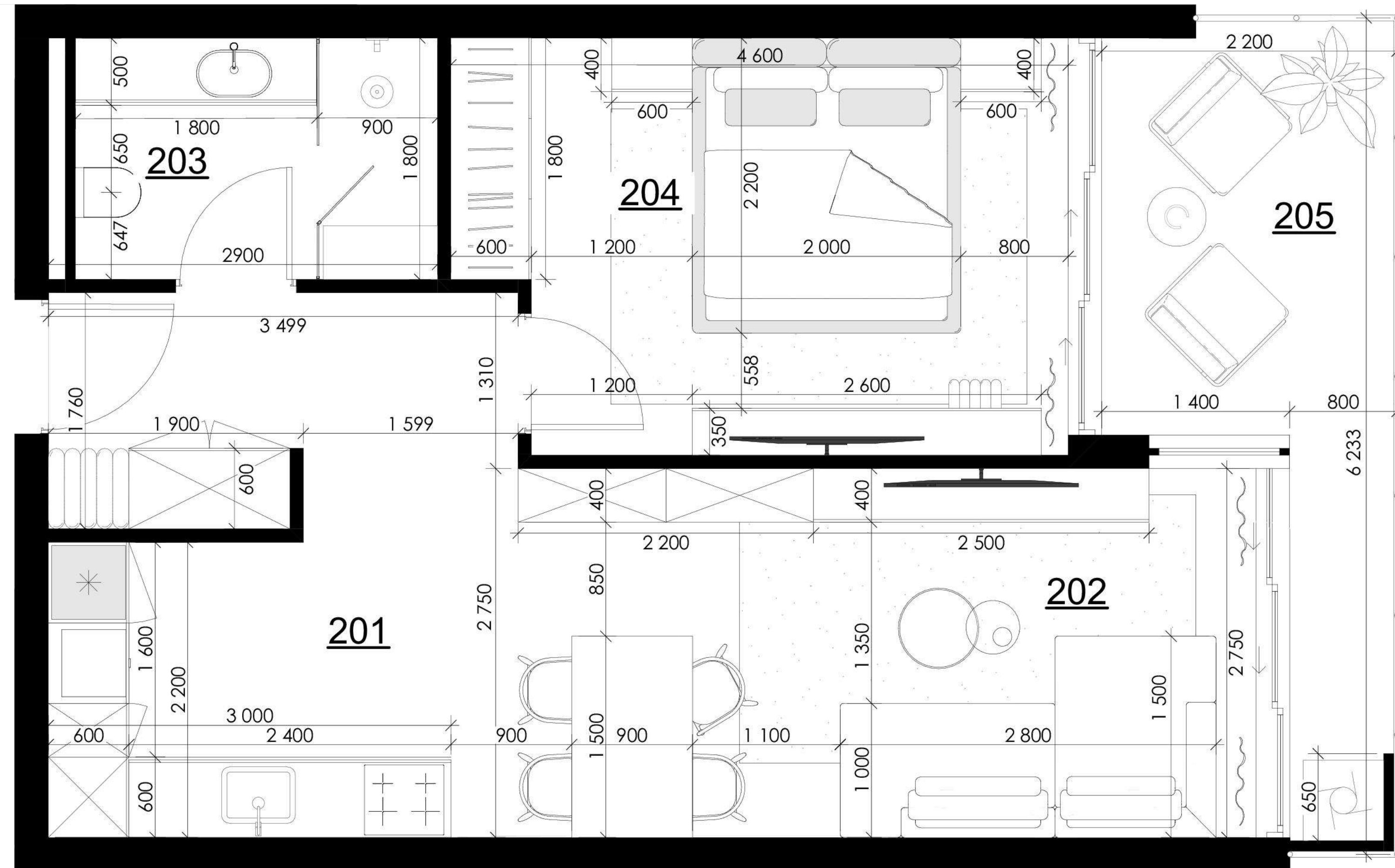


The interiors and textures are designed in a minimalist style with accent decor, infusing the apartments with freshness and openness. Upon opening the entrance door, you enter a hallway with built-in concealed storage closets, leading into a spacious kitchen-living area already furnished with all furniture and appliances.





LAYOUT





2-bedroom apartments

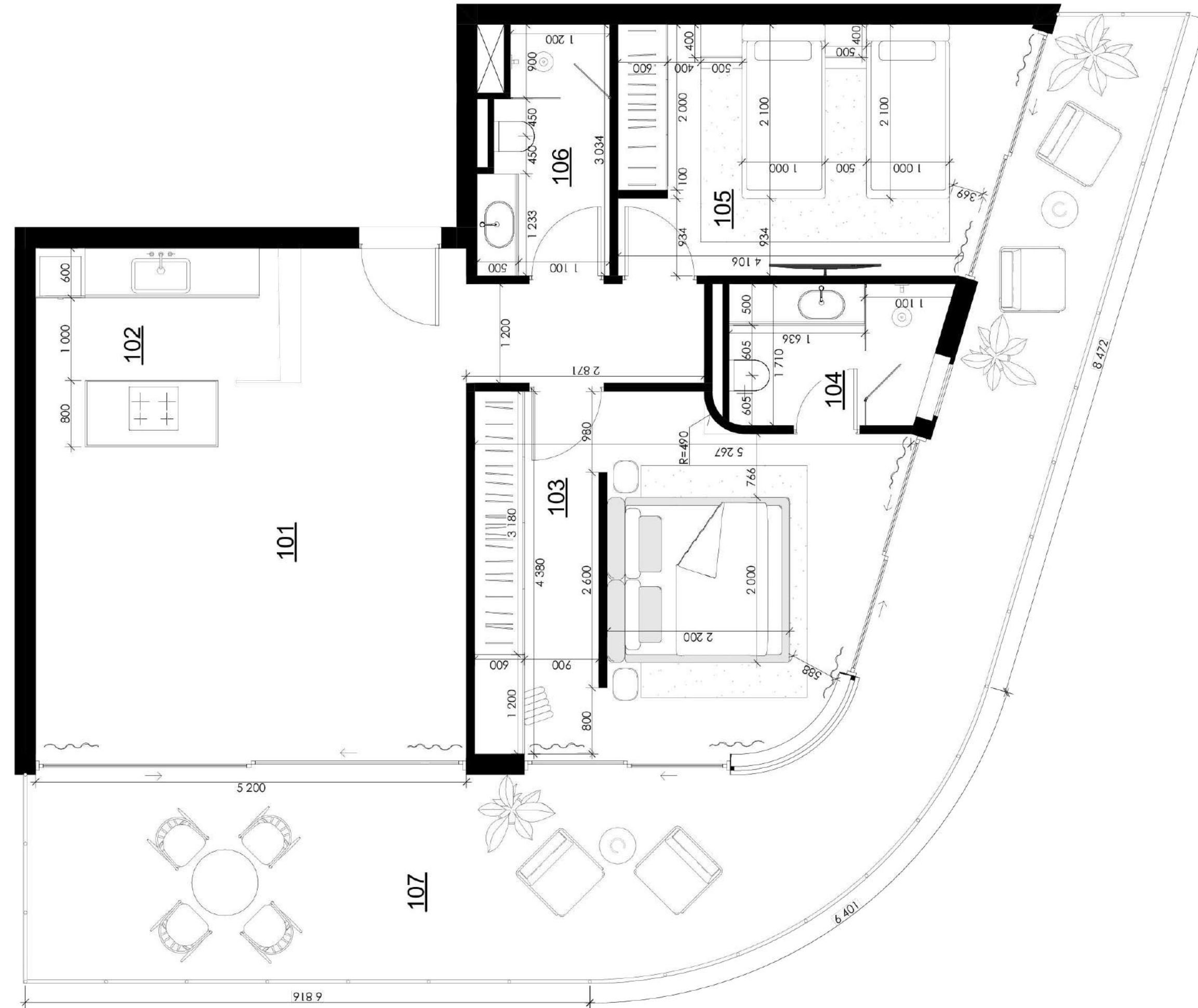
Quality materials and textures used in the interior solutions provide a pleasant tactile experience. The terraces deserve special attention – they offer views of the beauty of Chloraka and the Mediterranean Sea.







LAYOUT



Urban Natural
Oasis

07. contacts

E-mail info@reiwa-development.com

Website reiwa-development.com

Phone 80006666

Address Office 01, Ellados Leoforos 59,
Pafos, 8020

